

OUTLINE

SMT type power inductors where by the electrode is attached to the ferrite core directly. They are also magnetically shielded to prevent noise radiation.

SHIELDED TYPE
CDRH2D11

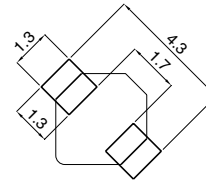
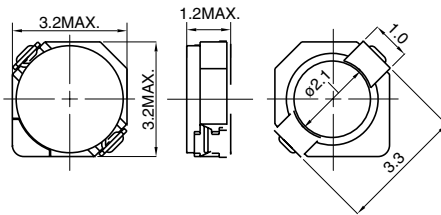
DIMENSIONS(mm)

LAND PATTERNS(mm)

CONSTRUCTION

NEW


(1.5μH – 10.0μH)


CDRH2D14

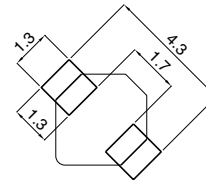
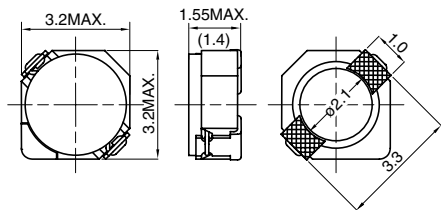
DIMENSIONS(mm)

LAND PATTERNS(mm)

CONSTRUCTION

NEW


(1.5μH – 12μH)


CDRH2D18/LD

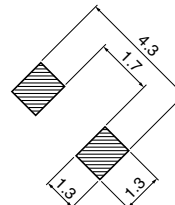
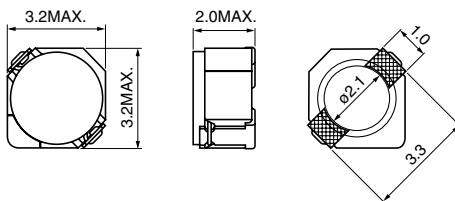
DIMENSIONS(mm)

LAND PATTERNS(mm)

CONSTRUCTION



(2.2μH – 47μH)


CDRH2D18/ HP

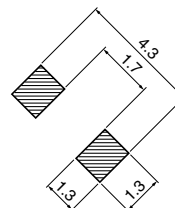
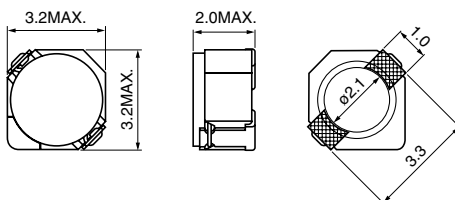
DIMENSIONS(mm)

LAND PATTERNS(mm)

CONSTRUCTION

NEW


(1.7μH – 15μH)



TYPE CDRH2D11, CDRH2D14, CDRH2D18/LD, CDRH2D18/HP

Parts No.	L (H)	CDRH2D11				CDRH2D14				CDRH2D18/LD				CDRH2D18/HP			
		D.C.R.(Ω): Max.(Typ.)	Saturation Rated Current(A) *C		Temperature Rise Current (Typ.) (A) *IV	D.C.R.(Ω): Max.(Typ.)	Saturation Rated Current(A) *C		Temperature Rise Current (Typ.) (A) *IV	D.C.R.(Ω): Max.(Typ.)	Saturation Rated Current(A) *C		Temperature Rise Current (Typ.) (A) *IV	D.C.R.(Ω): Max.(Typ.)	Saturation Rated Current(A) *C		Temperature Rise Current (Typ.) (A) *IV
			20°C	100°C			20°C	100°C			20°C	100°C			20°C	100°C	
1R5	1.5μ	68m (54m)	900m	680m	1.48	63m (50m)	1.80	1.20	2.00								
1R7	1.7μ													44m (35m)	1.85	1.36	2.20
1R8	1.8μ					75m (60m)	1.65	1.10	1.80								
2R2	2.2μ	98m (78m)	780m	580m	1.27	94m (75m)	1.50	1.00	1.60	41m (33m)	850m	670m	2.30	60m (48m)	1.60	1.15	1.90
2R7	2.7μ					106m (85m)	1.35	900m	1.40								
3R3	3.3μ	123m (98m)	600m	450m	1.02	125m (100m)	1.20	820m	1.24	54m (43m)	750m	550m	2.10	86m (69m)	1.45	1.10	1.55
3R9	3.9μ					138m (110m)	1.10	750m	1.12								
4R7	4.7μ	170m (135m)	500m	370m	880m	169m (135m)	1.00	680m	1.00	78m (62m)	630m	470m	1.65	140m (110m)	1.20	900m	1.20
5R6	5.6μ					188m (150m)	950m	600m	980m								
6R3	6.3μ													160m (128m)	1.05	780m	1.15
6R8	6.8μ	260m (210m)	440m	330m	800m	213m (170m)	850m	560m	920m	106m (85m)	520m	400m	1.32				
8R2	8.2μ					281m (225m)	800m	510m	800m								
100	10μ	400m (320m)	350m	260m	650m	294m (235m)	700m	460m	760m	180m (145m)	430m	330m	1.00	245m (195m)	850m	650m	900m
120	12μ					394m (315m)	620m	420m	640m								
150	15μ									220m (175m)	350m	280m	800m	345m (275m)	700m	530m	640m
220	22μ									320m (255m)	300m	220m	680m				
330	33μ									460m (370m)	240m	180m	560m				
470	47μ									660m (530m)	200m	150m	480m				

Measuring Freq. (L)

CDRH2D11	100kHz
CDRH2D14	100kHz
CDRH2D18/LD	100kHz
CDRH2D18/HP	100kHz

Tolerance of Inductance

CDRH2D11	1.5μH - 10μH ± 30% (N)
CDRH2D14	1.5μH - 12μH ± 30% (N)
CDRH2D18/LD	2.2μH - 47μH ± 30% (N)
CDRH2D18/HP	1.7μH - 15μH ± 30% (N)

Other

*C Saturation Rated Current : The current when the inductance becomes 35% lower than its nominal value.(Ta=20°C)

*IV Temperature Rise Current (Typ.) : The actual current when temperature of coil becomes ΔT=40°C (Ta=20°C)